

Flowmeters – High Pressure

General Descriptions

The Flowmeter is a general-purpose device; its working range can be individually defined according to its nozzle size. It is employed for measuring, regulating or metering and guarantees most precise measurement of fluid quantities.

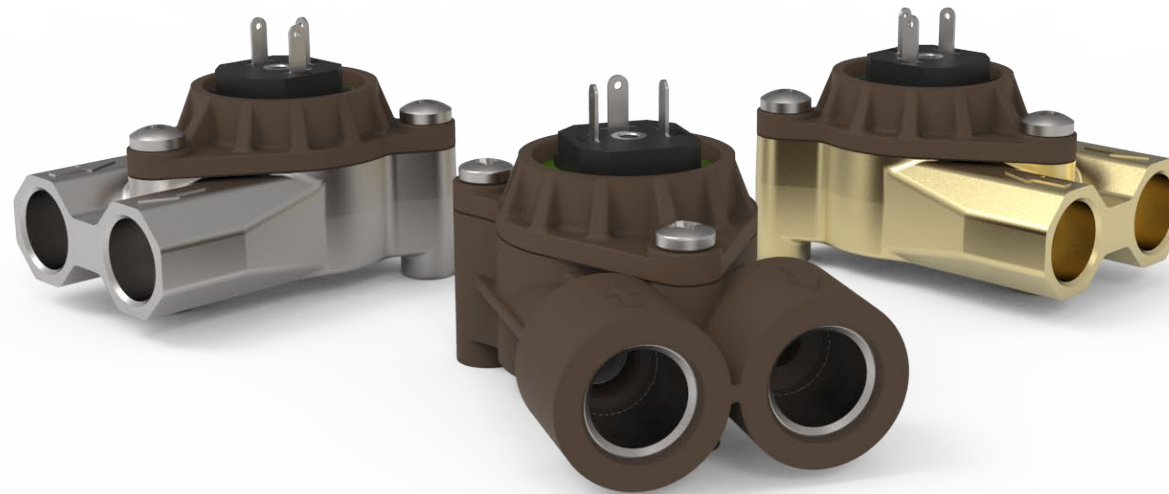
Specific Descriptions

Inlet and outlet on the same side, compact design, great working range, depending on the nozzle diameter.

Application Examples

Professional coffee machines, commercial ovens / bakery ovens.

Body Material AISI 304
Cover Material PPS GF40

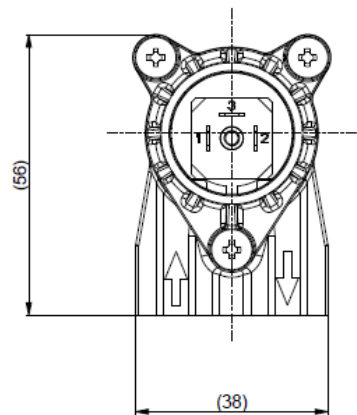
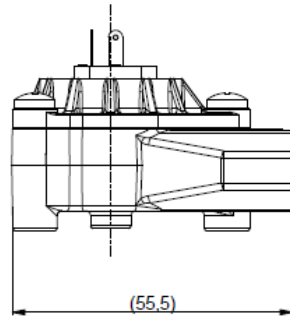
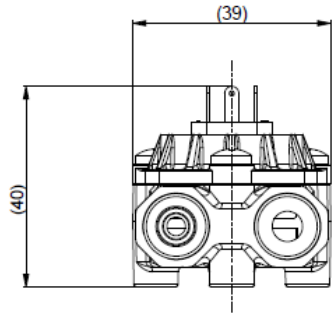


Body Material CW510L
Cover Material PPS GF40

Body Material PPS GF40
Cover Material PPS GF40

Flowmeters – High Pressure

Dimensions in mm



Products Features

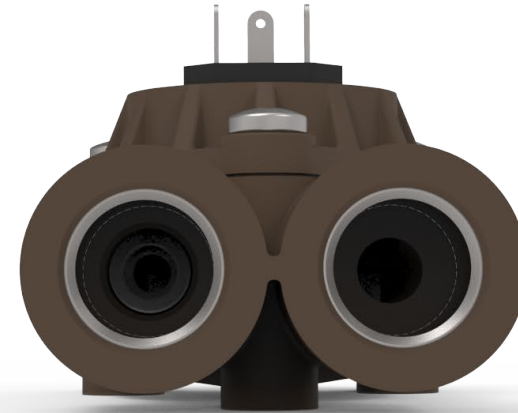
WORKING CONDITIONS	Mounting position	Horizontal
	Max. pressure	20 bar Threaded Connections
	Max. temperature	Water max 98°C at 20bar Steam max 140° at 3 bar*
MECHANICAL CONFIGURATION	Nozzle diameter	0.7 - 1.0 - 1.1 - 1.15 - 1,2 - 1.3 - 1.5 - 1.8 - 2.0 - 2.5 - 3.7 mm
	Impeller	2 magnets (2M) 4 magnets (4M)
HYDRAULIC CONNECTIONS	Connection	G1/8" - G1/4" (20 bar)
ELECTRICAL FEATURES	Power supply	3.8 ÷ 25.5VDC
	Max. Consumption	15mA
	Max (external) output voltage	25 VDC
	Max output current	25 mA
PERFORMANCES	Electrical output	NPN
	Accuracy	+/- 2%
	Repeatability	Better than 0,2%

Electrical Connections



We have two different types of connections available: faston connectors and MPM connectors.

Hydraulic Fittings



The threads are coated in steel.

Flowmeters – High Pressure

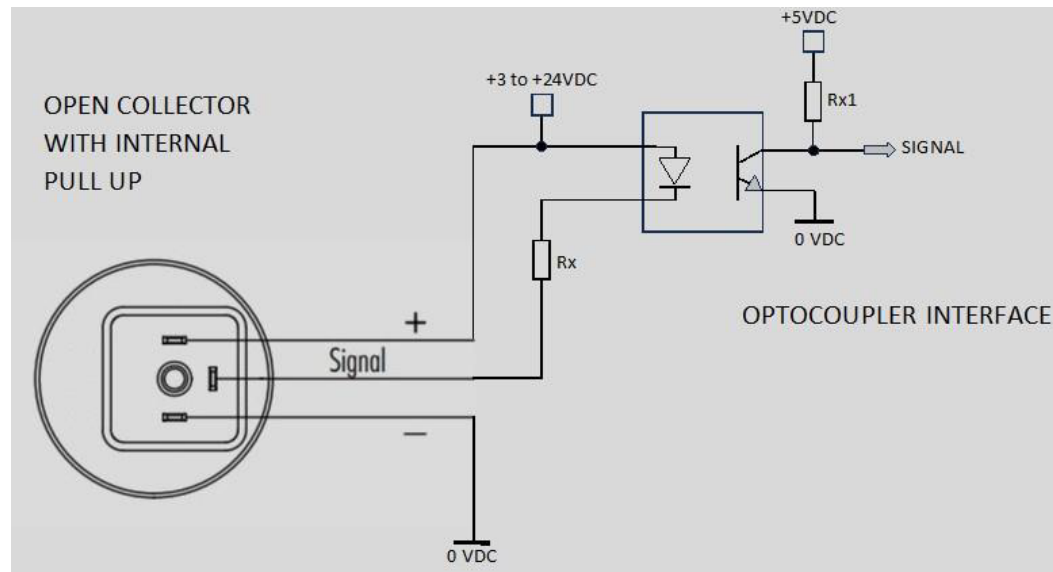
Values Measured

NOZZLE DIAMETER (mm)	DOSE PER PULSE (cm ³)		PULSES PER LITRE		FLOW RATE (cc/min)	
	2M	4M	2M	4M	MIN	MAX
0.7	0.3	0.158	3300	6329	25	700
1.0	0.47	0.23	2128	4348	32	1400
1.1	0.49	0.254	2050	3937	34	1525
1.15	0.5	0.267	2000	3745	35	1600
1.3	0.6	-	1666	-	40	1860
1.5	0.67	-	1492	-	45	2080
1.8	0.85	-	1176	-	60	2500
2.0	1.02	-	980	-	85	3000
2.5	1.44	-	695	-	120	4000
3.7	2.28	-	438	-	150	5000
6.0	4.72	-	212	-	300	6000

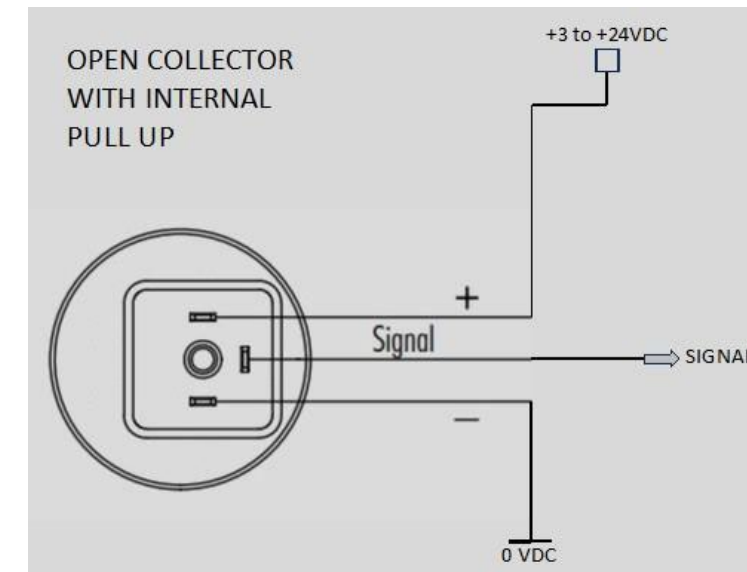
The values specified must be considered as approximate values. The number of pulses per litre may differ depending on the medium and installation. We recommend calibrating the number of pulses per litre in line with the complete installation.

Electric Connections

Open collector with internal pull up optocoupler interface



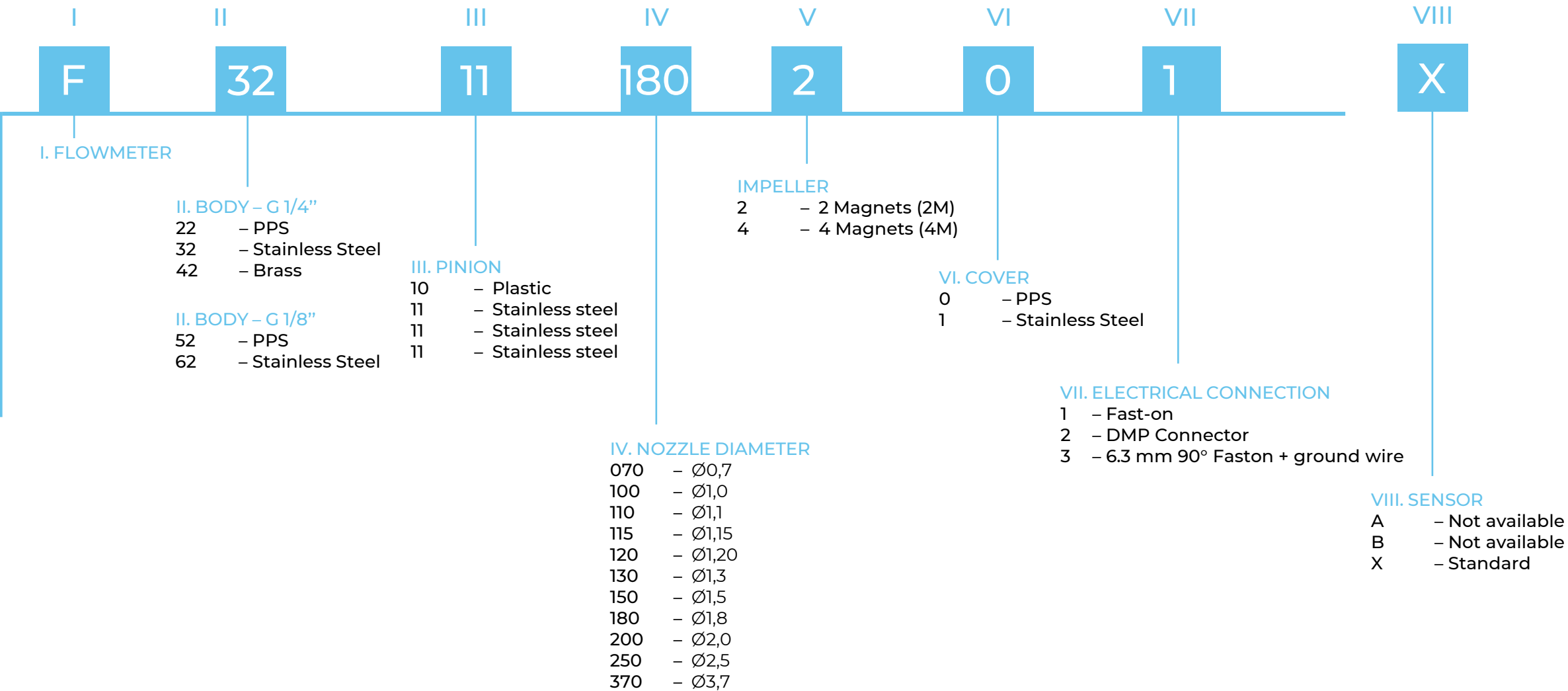
Open collector with internal pull up



The values specified must be considered as approximate values. The number of pulses per litre may differ depending on the medium and installation. We recommend calibrating the number of pulses per litre in line with the complete installation.

Flowmeters – High Pressure

Article code



Certifications



UL Certification



NSF Certification
Standard NSF/ANSI 169



Regulation 1935/2004/CE
Contact with food

Measurement Tips

- Ensure that there are no reverse pressure surges
- Ensure that there is no air in the system
- Keep the pressure loss as small as possible
- Note the mounting position of the flowmeter
- Min/max flow should be in the linear range of the selected flowmeter
- Clean the system at appropriate intervals
- Avoid electrical current peaks
- Incorrect cabling of power supply +, signal and ground will destroy the flowmeter
- Avoid moisture on the electrical contacts

Specific Description

Inlet and outlet on the same side, compact design, great working range, depending on the nozzle diameter.





www.cemegroup.com