

APPLICATION COFFEE VENDING

Your needs, our ideas

SPECIALIZED
IN SOLUTIONS

ENGLISH EDITION

ABOUT US

CEME Group and its Brands, with extensive **experience** in the coffee machine industry and **expertise** in research for innovation and the supply of highly customized products.

These aspects and our future orientation have brought us to be a **leader in the coffee machines market**, with the capability to offer always the best and the most complete solution to our customers.

Tradition, experience and innovation.
WE ARE READY FOR THE FUTURE

YOUR NEEDS OUR IDEAS

As a market-leading group in the coffee machine industry, **CEME Group** is capable of **providing its customers with comprehensive and customized solutions** for any type of need and application. We specialize in creating complete and specific systems for various types of machines:



DOMESTIC



SEMI-AUTOMATIC



AUTOMATIC



PROFESSIONAL



VENDING



COFFEE MACHINES SYSTEMS



COFFEE MACHINES

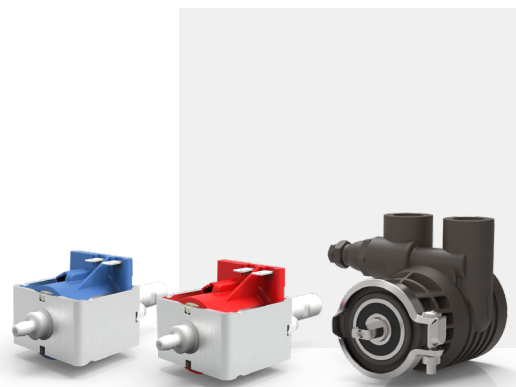
COMPONENTS

FLOWMETERS



These components can accurately measure the water flowrate. **Precision, durability and stability** are fundamental features of flowmeters. **CEME Group** flowmeters are suitable for different usage both in the presence of fluids at high temperature and pressure, as well as in applications within environments characterized by limited dimensions. Our flowmeters are certified NSF, FDA, LFGB, CE.

PUMPS



A wide range of compact or standard **solenoid pumps**, from 2,5 to 20 bar, certified VDE, CE, CQC, UL, CB, NSF, LFGB. **MOCAREEL®**, the innovative rotary vane pump made of PPS, carbon graphite and stainless steel completes the range. Available in different sizes, from 50 l/h to 500 l/h, with a maximum pressure of 16 bar.

ACCESSORIES



In addition to its wide range of solenoid pumps, **CEME Group** can also offer a variety of accessories: from **fitting** to **priming valves**, **pump's brackets** and **thermal protectors**. For MOCAREEL it is also available the electric motor.

WATER CHARGING VALVES



The new CEME Group solenoid valves for the water management market are 2/2 way pilot valves with a Ø11 mm size and a **PA66 body**. They can operate within **pressure ranges of 0.1 to 10 bar**. Versions with snap-action and low consumption with cable connectors are available.

COFFEE SUPPLY UNIT



2/2 and 3/2 ways solenoid valves, with **Hose, Push-In** and **flanged connections** to link body valves directly to boilers. **CEME Group** can provide these valves both in **single configurations** and with the **innovative modular system**, which allows to set up manifolds depending on the customers' needs. The bodies of these valves can be made of technopolymer, stainless steel or brass with low content of lead. All these products comply with food grade certifications.



TOTAL SEPARATION

Solenoid valves particularly suitable for the **proper handling of aggressive or non-contaminable fluids**. The fluid is solely in contact with the valve body and the isolation elements, hence free from any kind of chemical contamination. Particularly suitable for applications in the food and beverage environment, for the **management of the milk or juice line**. Available in various materials such as food-grade technopolymers and aluminum.



WATER AND STEAM SUPPLY UNIT

2/2 and 3/2 ways solenoid valves, with **Hose, Push-In** and **flanged connections** to link body valves directly to boilers

CEME Group can provide these valves both in **single configurations** and with the **innovative modular system**, which allows to set up manifolds depending on the customers' needs.

The bodies of these valves can be made of technopolymer, stainless steel or brass with low content of lead. All these products comply with food grade certifications.



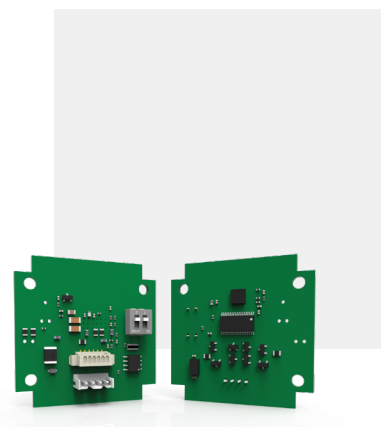


HI-TECH
COMPONENTS



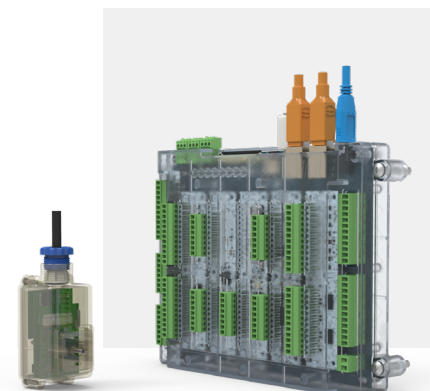
SOLENOID VALVES AND PROPORTIONAL VALVES

Proportional valves with solenoid or stepper motor acting for gases and liquids, suitable for a wide range of working pressures and temperatures. Proportional solenoid valves ensure 100% duty cycle and IP 65-67 electrical protection. **Stepper motor valves** guarantee a faster and more accurate control of fluids compared to standard proportional valves. Low hysteresis effects. The heat sink is an option.



HI-TECH SYSTEM DRIVER

Electronic drivers can be programmed **to control circuits** in a closed loop, **to regulate the flow** respect a target, using a feedback that comes from a sensor (e.g. pressure, flow, temperature); or in an open loop, to regulate the flow proportional to a control signal, that originates from the host system.



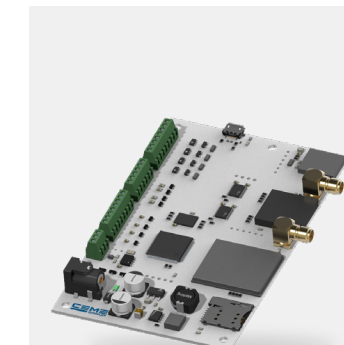
HI-TECH SYSTEM +SMART RANGE

+SMART ONE is a system that enables the control, monitoring, and management of machine parts or entire machines through the integration of a PLC. **+SMART CUBE V2** features an architecture that allows for the integration of various I/O modules available on the main board, providing a solution that reduces overall dimensions and adapts to all needs



HI-TECH SYSTEM PRESSURE TRANSDUCERS

Pressure transducers generate an electrical output signal proportional to the inlet pressure. The ceramic sensor detects the pressure of the most common fluids: air, water, gas, steam and light aggressive media. PT Series fulfil the requirements of the EMC Directive.



HI-TECH SYSTEM GATEWAY

All the information processed through this device can be sent to a personalized **cloud platform**. IoT devices in the industrial world are a **fundamental aspect** of the optimization process of the production. The **secure transferring of data** is an ideal base for several standard applications or a simple way to solve applications not supported from traditional technology.



ROADMAP

TECHNOLOGICAL EVOLUTION

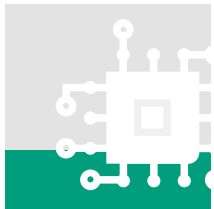
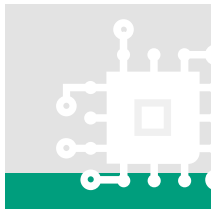
The **strong focus on innovation**, which has always distinguished the company, has made it possible to reach **high levels of expertise** in different issues within the world of coffee.

Among which the great development of solenoid valves made of **technopolymer PPS**, a food grade certified material.
And the development of **Hi-Tech solutions**, such as the **+SMART range**.
As well as the capability to offer complete **System Solution**.

TECHNOPOLYMER



HI-TECH

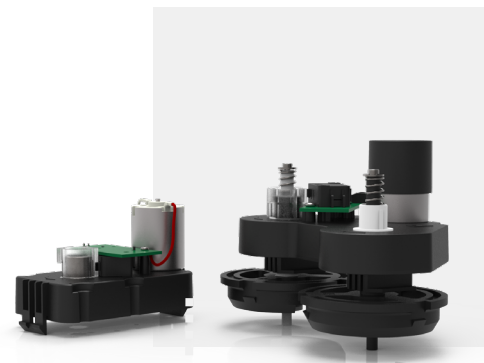


SYSTEM SOLUTION



VENDING MACHINES

Gearmotors find multiple uses in the vending sector, among which basically the **rotation of product dispensing spirals** and the **blending/dosing of powders**.



SPIRAL



VENDING

GEARMOTORS VENDING MACHINES

Vending machines employ a matrix of gearmotors, in which every spiral is driven by a single gearmotor. Once activated, it generates a torque, which is sufficient for the dispensing of a product. Thanks to microswitches or other technologies a feedback signal is generated, which the electronic control unit of the machine reads as a complete turn of the spiral. At that point product is dispensed. CEME Group's solutions are all customizable and designed in collaboration with the client.



AUTOMATIC

GEARMOTORS AUTOMATIC BEVERAGE MACHINES

Into these machines gearmotors are employed in the phase of blending/dosing of powders for the dispensing of different beverages.

CERTIFICATIONS

CEME Group Vending range products are ideal to be employed in contact with alimentary fluids, in accordance with the most important European and American standards. All the assembled materials have been accurately selected to guarantee the highest degree of safety in food applications.

Compliance with the European and International Regulations.



MOCA

Vending range products are designed and produced in compliance with the European Regulation n. 1935/2004 and the GMP European Regulation n.2023/2006.



NSF CERTIFICATION

Vending range products are certified in accordance with the American standard **NSF 169**, universally recognized as guarantee of quality, safety and reliability. Metallic and plastic materials and elastomers are accurately selected to comply with the imposed requirements in the matter of contact with food.



VDE-UL-CSA ELECTRICAL CERTIFICATION



CEME Group coils are certified in accordance with the most important European and American standards.



UKCA



CEME Group products show the **UKCA** (UK Conformity Assessed) marking. This is the product mark to be used for products placed on the market in Great Britain to demonstrate their compliance with the technical regulations in force in the UK.

CONTACT INFORMATION

www.cemegroup.com
in

Registered Office
Viale dell'industria, 5
27020 - Trivulzio (PV), Italia

Ph.: +39 038293011
E-mail: info@cemegroup.com